

CARE SINGAPORE



Discovery

ANNUAL REPORT 2021/2022

Pre-Amble:

NOW matters!

What happened before no longer exists.

What will happen next has not yet been written.

We have only now and that is our greatest advantage.

Let's discover together what we do now and seize the power to determine the future.

The Journey to SP25 continues, as we go:

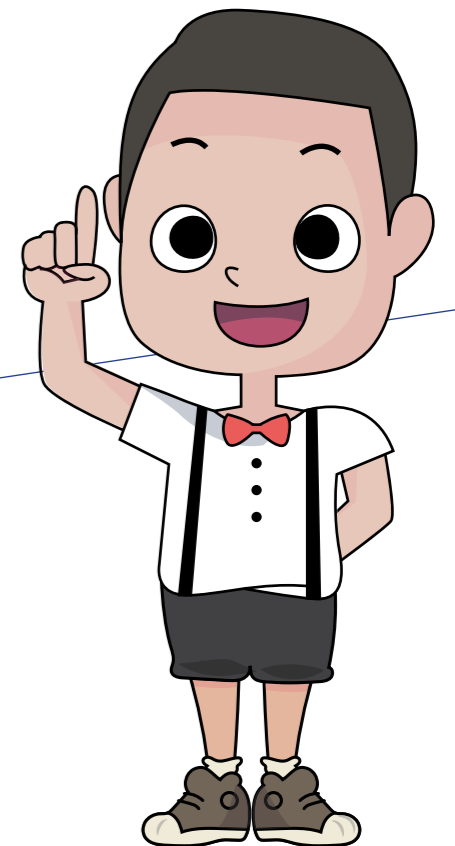
Wider, serving a larger segment of people, beyond just youths, within the community.

Longer, journeying with youths over a longer period of time, increasing the impact of our work.

Deeper, in providing mental wellness and therapeutic help to those in need.

Contents

Pg 2	Chairman's Message
Pg 3	Executive Director's Message
Pg 4	Discovery
Pg 10	Programmes Reports
Pg 12	Golden Moments
Pg 14	Communications/ Volunteers/ Donation and Support Raised
Pg 20	Governance Reporting



Chairman's MESSAGE

Happy 25th birthday to CARE Singapore!

Thank you to our sponsors, donors and volunteers for supporting us through the pandemic winter and making sure that we were able to continue to deliver our services effectively, so that help reached everyone who was in need.

Your belief in us and our work fuels our *F.I.R.E and encourages every single CARE staff to go beyond themselves every single day. It gives energy to stretched muscles, vigour to tired minds and nourishment to parched souls who have given every ounce of their love in service to our community.

The pandemic has irrevocably altered the realities of life, exacerbating the lives of many who were teetering on razor thin nerves and even leaner pockets. And so, with a deep breath and a gallon of faith, we chose to act now! To expand and meet the needs that have arisen and mend the gaps which have formed.

The board has every confidence that the CARE Team, led by John, will be able to rise to the moment and find ways to help them regain normalcy in life so that when the scourge is finally vanquished, they would be ready to spring back with resilience to inherit the world and make it a better place.

We hope that you will continue to trust in us, support us when you can but also, lean on us when you need a little more help. We have travelled so far together, let's discover the new world as one party too.

Thank you.

Mr Jeffrey Neo
Board Chairman

* Note: F.I.R.E refers to CARE Singapore's core values of **F**aith, **I**nnovation, **R**esilience and **E**mpowerment

Executive Director's MESSAGE

Da-Da-Da-DUM!

Just like the famous opening notes of Beethoven's Fifth Symphony, growing from childhood into adolescence can feel like Fate's knocking on your door.

For some, it heralds a time of abundant energy with an insatiable desire for discoveries and for others, a time fraught with struggles for personal identity and overwhelming emotions that threatens to engulf them.

And when change is inevitable, a guiding light to show the way can mean a world of difference. For over 25 years, CARE Singapore has devoted itself to be the flame that lights the way, leading the young ones with *F.I.R.E, casting away shadowy fears and warming the lonely hearts.

And I have been blessed to have travelled this path with CARE Singapore and the many students we have touched, and am esteemed to lead the team into a new age of Discovery - one filled with creative Tensions that will find new and better ways for us to transcend the Thresholds and complete our Transition to best serve all young persons and their families.

The future looks brighter than ever with our *F.I.R.E burning strong and the community of donors, sponsors, volunteers and stakeholders rallying to our call to deliver the best service to those we serve and to "Leave no youths behind".

Thank you for your trust in us!

Dr John Tan
Executive Director

* Note: F.I.R.E refers to CARE Singapore's core values of **F**aith, **I**nnovation, **R**esilience and **E**mpowerment



Discovery

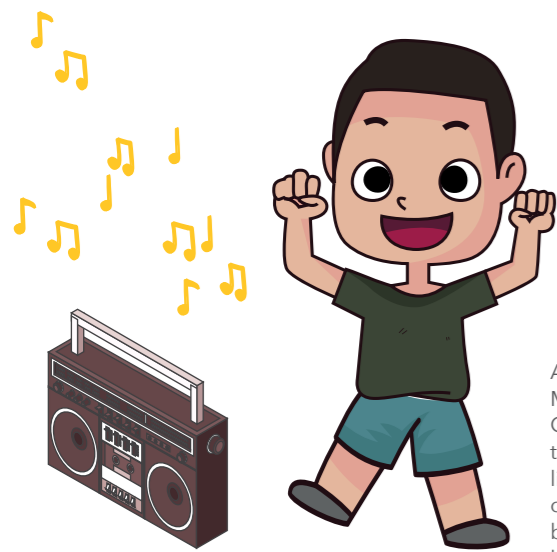


Discover a Day at CARE

Applied Suicide Intervention Skills Training (ASIST Workshop)



The ASIST workshop trains all CARE staff in suicide first-aid, and equips them with the necessary skills to recognise and assist those who may be at risk of suicide.



As part of World Mental Health Day, CARE was invited by TikTok to host an interactive livestream where we discussed our community's burning questions on mental health, in real time.

School Activities



In school, our youths built confidence through sports activities with their CARE teachers and mentors.



In the classroom, our youths learn fundamental life skills such as teamwork, overcoming challenges and treating others with respect.

TikTok Live



Discover Our Donors:

Collaboration between CARE Singapore, Guardian Singapore and Punggol West Grassroots

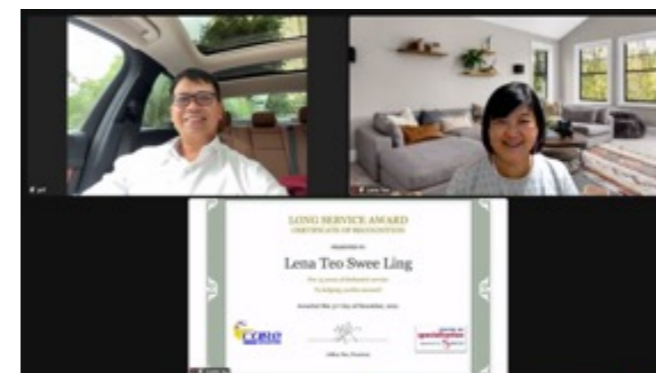
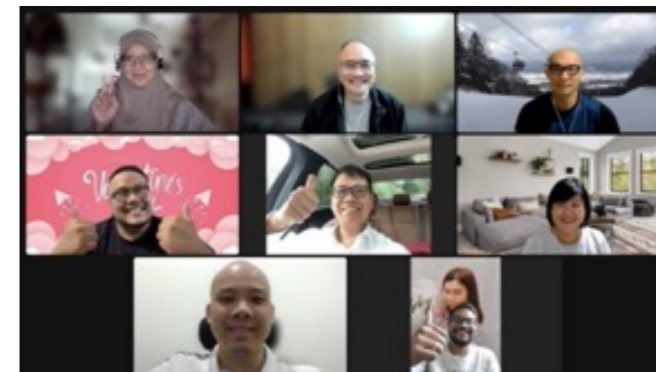


In February 2022, CARE Singapore, together with our CSR Partner, Guardian Singapore collaborated with Punggol West GROs and distributed CARE packs to residents in need. Ms Sun Xue Ling and a combined team of dedicated volunteers from the three agencies distributed over S\$1.2m worth of essential items to over 2000 families.



Long Service Award

The Long Service Award celebrates staff that have been in service with us for 5 years or longer, and one of the ways we show that we see, acknowledge and CARE.



Discovery

A New workforce

With support from government agencies, CARE was able to recruit and deploy talents in the area of emerging technology and Human Resource through National Youth Council's YouthTech program and the National Council of Social Service's Transformational Support Scheme.

These accelerated our ability to emerge future-ready once COVID-19 situation stabilises.

Discovering New systems

FOR EXPERT PARTNERS

YOUTH TECH

INFORMATION ON THE ROLE OF AN EXPERT PARTNER

What is the role and involvement of an Expert Partner?
Expert partners with relevant digital-driven service offerings will provide support in one or more of the following areas:

- Work with Trainees and Host Organisations to: (i) identify gaps and assess digital needs; (ii) scope digital solutions, project deliverables and manpower requirements to spur digitalisation efforts; and
- Training: Develop capabilities and mentor youth to deliver digital solutions

Can an Expert Partner also host Youth Trainees?
Yes, an Expert Partner can possibly host Youth Trainees too. Please refer to FAQs for Host Organisations.

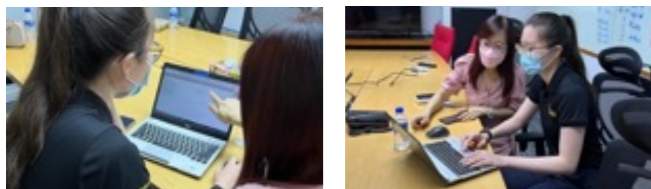
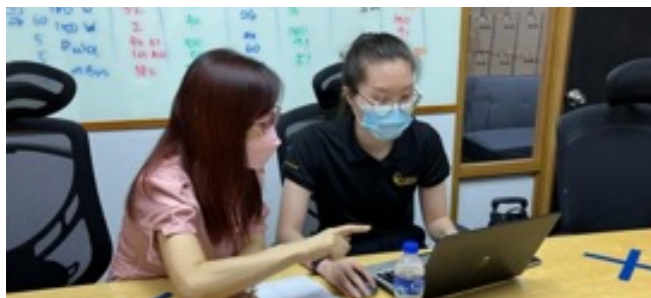
Where can I find more information about being an Expert Partner?
For more information, please visit [YouthTech website](#) or [send in an email to NYC](#).

During the year, CARE embarked on several technological projects. These included

- * Zeles (Volunteer Management)
- * Enabley (Learning Management)
- * Entomo (Performance Development)

We also embarked on training via the YouthTech Expert Partner series of workshops.

Zeles Training:



Twitter:

HELPING YOUTHS SUCCEED.

CARE Singapore @CareSingapore

Helping youths succeed!
Sharing info on: Mental Wellness | Self-care | Youth Empowerment

HEAR4U line (WhatsApp): 6978 2728

[linktr.ee/CARESingapore](#)

Eastside Singapore care.sg Joined November 2021

34 Following 1,632 Followers

LMS:

My Learning Space

- Safe Management Measures
- Working with Youths
- Working with Children
- Self Care

PDS:

Empowering Performance on the Go

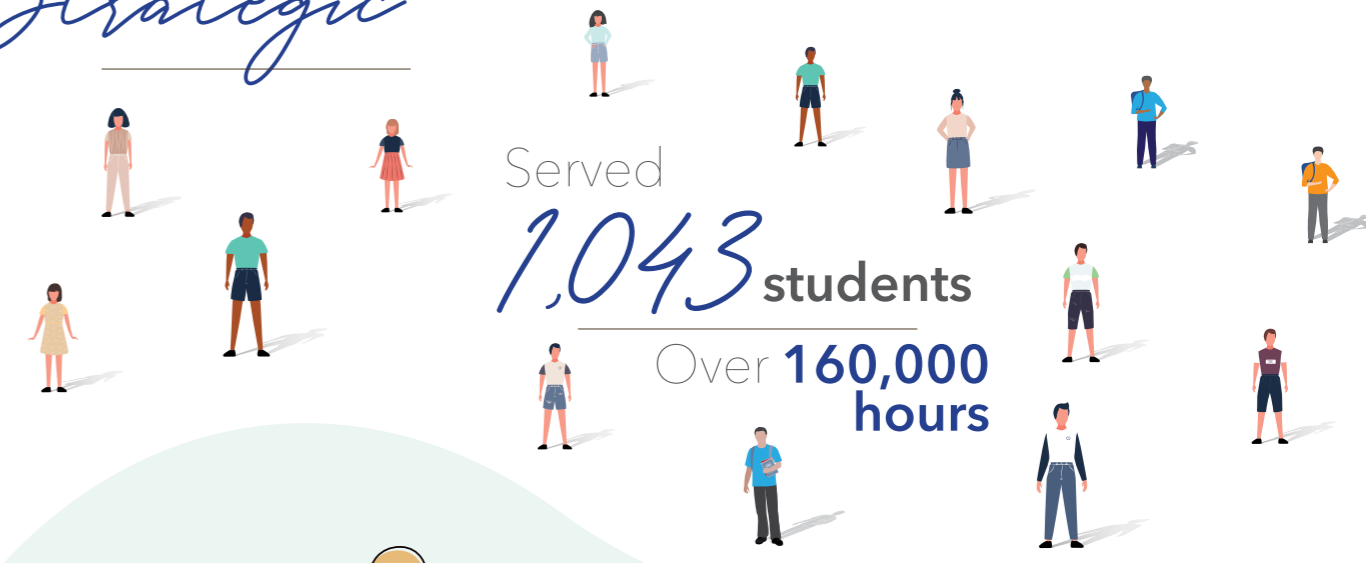
Our platform was built with the end user in mind, allowing easy access to data, anytime, anywhere via the mobile, tablet and the PC through our simple and intuitive user interface.

Technology transforms the concept of KPI management by making the process digital, user-friendly, and transparent.

Custom dashboards that link individual, team and division insights allow for at-a-glance understanding of KPIs and outcomes – democratizing data and sharing information with those who need it to do their jobs.



Strategic



Served **1,043** students
Over **160,000** hours



More than **4,500** hours of counselling



Channeled **\$1.4 million** worth of **Donations in Kind**

Collaborations

MENTORING

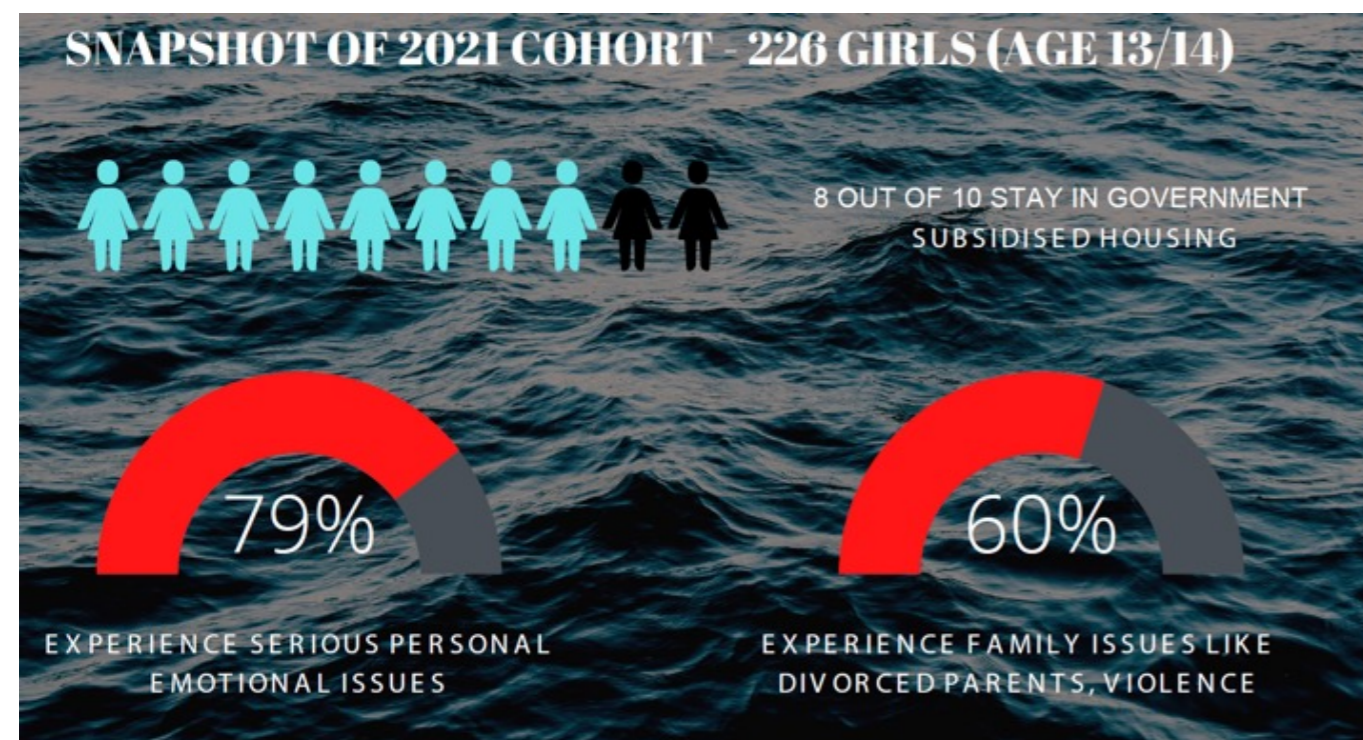


Our mentoring collaboration with Marina Bay Sands continued into 2022, morphing from the mainly virtual sessions into in-person sessions when COVID-19 restrictions were progressively lifted.

Our deepest appreciation to MBS and their staff for taking the lead in mentoring youths and helping them secure a better future.

Girl Power

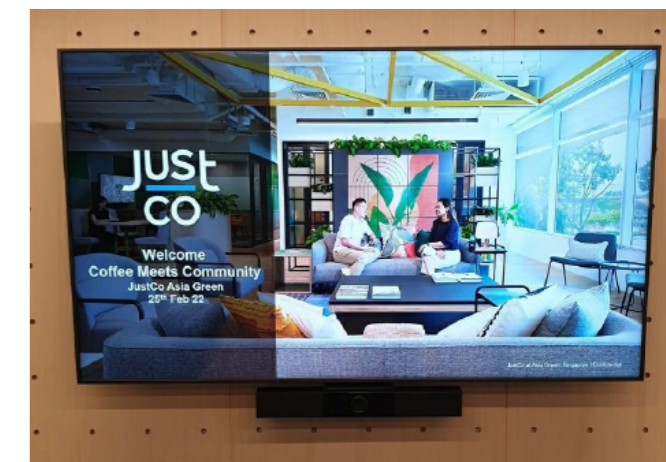
A total of 226 students were enrolled in CARE Singapore's Girl Power! Programme, which is a year-long programme that guides young girls towards a better future through deeper appreciation of their own body and mind.



Doing good with NVPC - Coffee Meets Community



In collaboration with the National Volunteer and Philanthropy Centre (NVPC), we organized a "Coffee Meets Community" session at JustCo - Asia Green. The session was well attended by participants from over 10 SSAs and was an afternoon well spent networking and co-solutioning for common good.



Programme REPORTS

Discover Our Impact SGSS CARE Showcase



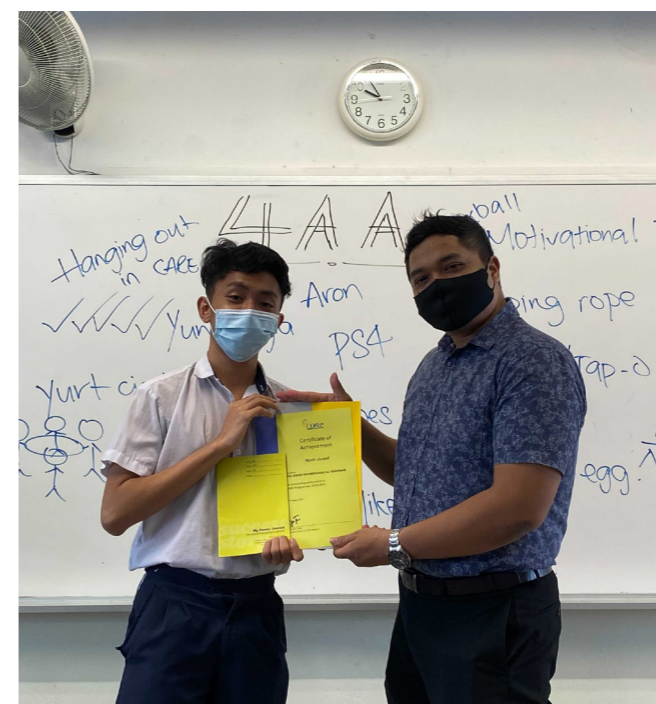
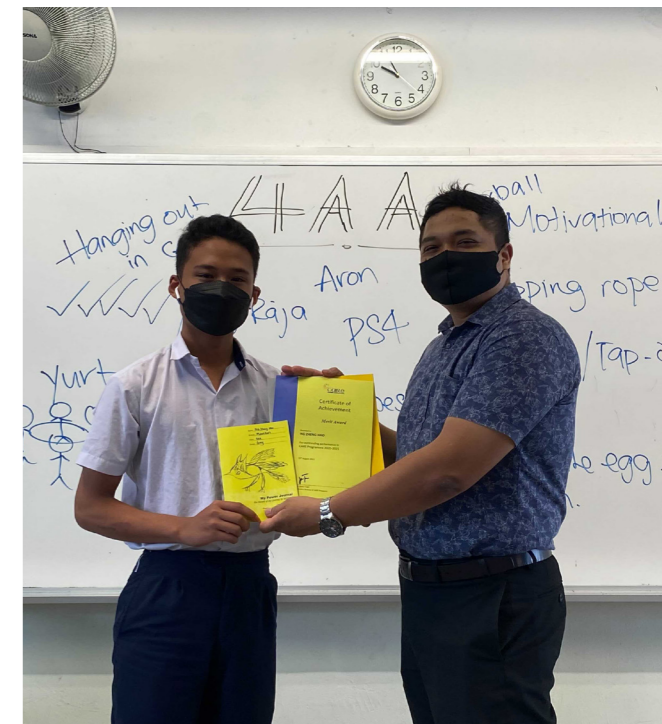
Here at CARE, we believe in empowerment through encouragement. We plan and hold annual showcases to feature the growth, talent, and achievements of our students over the year. As every youth is different, it is important that we ensure our students feel valued and acknowledged for their efforts, no matter how big or small.

BGSS CARE Showcase



Our thanks to **W-Optics** for giving our students clearer vision through sponsorship of eyewear and helping them focus on their studies.

Montfort 4AA Showcase



Regardless of academic achievement, we believe that every youth is talented. We endeavor to create opportunities to acknowledge these talents, and inspire our youths to reach their fullest potential

Golden MOMENTS

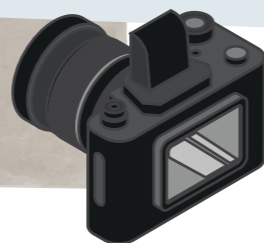
Discover Holistic CARE With Us:

Student Engagement

G-Star



Little Changemakers - STEM Art Mosaic Vase & Mini Brickwork



After School Engagement (ASE)



SGSS Day Camp



Family Engagement

Sentosa Fun Pass Family Engagement



Mental Wellness

East Coast GRC X CARE Singapore Cyber Wellness Livestream



Communications/Volunteers

Donation and Support Raised

Discover CARE's Outreach Efforts

NCHS Fundraiser (donation & support)



Students from Nan Chiau High School hosted a fundraiser for CARE as part of their school's annual "Shine" event. Selling out all 250 of their balloons and hitting 60% of their target donation amount within the first 2 weeks, they raised **\$1812** and showed us the power of youths supporting youths.

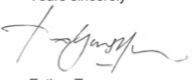
CSSCOM donations (donation and support)

With the 215 bags of rice donated by MINDEF CSSCOM, we were able to distribute them to those in need in our Pasir Ris and Punggol community through NPOs and PAs such as Apex Harmony Lodge, Special Needs Trust Company and more.



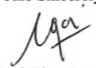
We have given away the 60 sacks of rice to 60 low-income families whose household have at least one member with special needs. Through your generous donation, SNTC is able to support these caregivers and make a difference to their lives as we journey with them on the future care planning for their loved ones with special needs.

On behalf of our beneficiaries, we would like to express our heartfelt gratitude for your invaluable support and look forward to forging closer partnership with you. Thank you.

Yours sincerely

 Esther Tan
 General Manager

The grassroots organisations in Kembangan-Chai Chee Constituency are very appreciative of the kind assistance rendered by CARE Singapore and CSSCOM. We look forward to their continued support towards the community.

Thank you.

Yours Sincerely,

 Ngoi Khor Peng, PBM
 Chairman
 Kembangan-Chai Chee Citizens' Consultative Committee

Community Mentoring (volunteers)

Volunteers from all walks of life came forward to sign up as mentors for our students. They dedicated their time to completing the training and spending their weekends engaging their mentees over the period of a year. With the eased-up restrictions, they were also able to have more in-person sessions with their mentees and continue inspiring them as positive role models.



Credence Grocery Drive (donation & support)

In conjunction with Hari Raya celebrations, Credence hosted a door-to-door grocery delivery drive with items donated by them. Together, we packed and delivered groceries to 78 households.



Thank You **FOR YOUR LOVE**

We would like to thank all our donors who have supported us through this tough period and made it possible for us to continue our work.

We were blessed with strong support from the community who gave cash donations as well as items ranging from provisions for our students, rice and health products.

Our special thanks to each of you for making a difference and for helping us raise over S\$3.25m in the last FY.

Thank you - Our corporate donors

- Guardian Singapore
- ICAP SINGAPORE PTE LTD
- Marina Bay Sands
- TIKTOK PTE LTD
- PGIM
- Chloride Battery SE Asia
- Tan Chin Tuan Foundation
- Allianz SE Singapore Branch
- PEARL ASIA PACIFIC PTE LTD
- NG KIM SUAN FOUNDATION

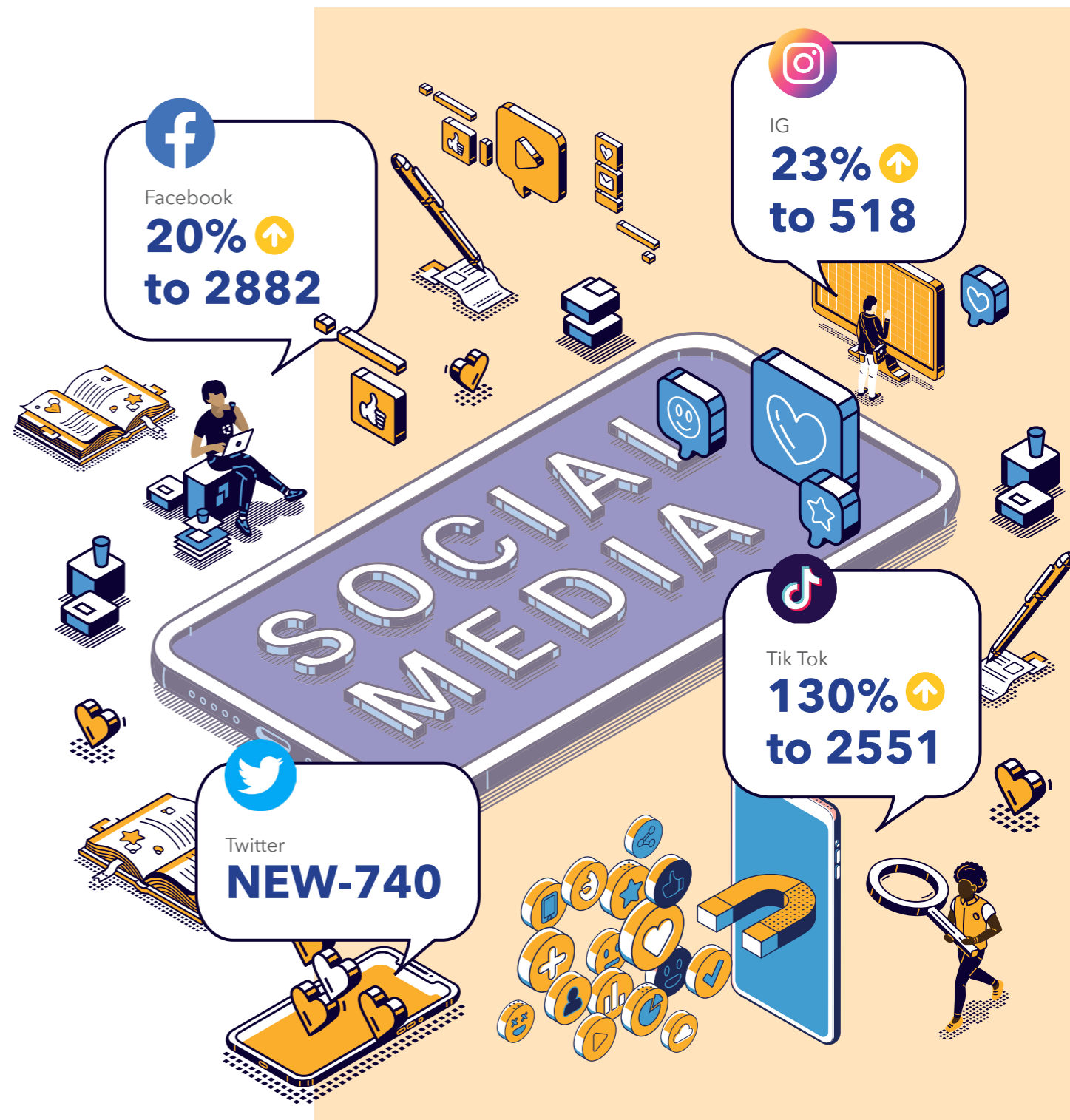
And all our volunteers in the Mentoring and school programmes.



Let Our Voice **BE HEARD**

As CARE pivoted our services, we increased our digital presence on social media to ensure that those who require help know where to find us.

The push towards digital space will help buffer us against workstream disruptions from COVID-19 type episodes and help us connect with the new generation of digital natives.



Governance REPORTING



Jeffrey Neo
Chairperson
Joined 2000



Rudy Pierre Low
Vice-Chairperson
Joined 2006



Ester Gerber
Hon. Secretary
Joined 2003



Neo Kah Yean
Member
Joined 2008



Mei Siregar
Member
Joined 2004



Darren Lai
Hon. Treasurer
Joined 2013



Kenneth Pan
Member
Joined 2008



The society is mindful of the suggested tenure cap of board members as ten consecutive years of service. Current board members provide stability to the society through their experience and consistency of service.

Nonetheless, and notwithstanding the possible constraints posed by the society's Constitution with regards to new board member recruitment, the Board is committed to consider ways to institute board renewal.

Board MEETINGS ATTENDANCE

CARE Board Attendance 2021 to 2022

	Name	Date	28/7/21	6/10/21	9/12/21	2/3/22	28/6/22	% attend
1	Mr Jeffrey Neo		1	1	1	1	1	100
2	Mr Rudy Pierre Low		1	1	1	1	1	100
3	Mr Kenneth Pan		0	1	0	1	0	40
4	Ms Ester Geber		1	0	1	1	1	80
5	Mrs Mei Lin Siregar		1	1	1	1	1	100
6	Mr Darren Lai		1	1	1	1	1	100
7	Ms Neo Kah Yean		1	1	1	1	0	80

All Board and Board Committee Members are volunteers who contribute pro-bono their time, expertise and services. They do not receive any allowance, honorarium, reimbursements or remuneration for their efforts.

Management Of Conflict Of Interest

The Society has a conflict of interest policy in place. All trustees/office bearers and key management personnel are required to read and understand the conflict of interest policy. They are required to make full disclosure of interests and to sign the declaration form every year. When a conflict of interest situation arises, the person concerned shall declare his or her interests and abstain from participating in the discussion, decision-making and voting on the matter.

There was no transaction with a corporation in which the trustees/office bearers and the key management personnel had an interest during the fiscal year 1 May 2021 to 30 April 2022.

The Annual Report should be read in conjunction with the audited Financial Statement. The required disclosures in conformity to the FRS (Financial Reporting Standards in Singapore) and Code of Governance for Charities and Institutions of a Public Character issued by the Charity Council (April 2018) are contained in the audited financial statements.

HELP EVERY YOUTH SUCCEED!

Children-At-Risk Empowerment (CARE Singapore)

Add: CARE Singapore
428 Pasir Ris Drive 6
#01-21
Singapore 510428

Email: care@care.sg

Web: www.care.sg

UEN: T00SS0043E

IPC: IPC000150

Charity Registration No.: 1509



Scan to donate